

Concealed Carrier System for Wall-Hung Urinals



Model 111.685.00.1

Product Specifications

Concealed carrier system with actuator flush panel for residential 2-hole wall-hung urinals. System shall fit within 5½" (140 mm) framing wall or plumbing chase. Framing members should provide support similar to 2" x 6" (51 mm x 152 mm) wood construction or steel framing members placed 19¾" (500 mm) apart. Water supply shall have flow diameter no smaller than ½" (13 mm) copper tube, and a minimum flow pressure of 35 PSI (0.24 MPa). The urinal shall be a third

party listed maximum [1.0 GPF (3.8 LPF)] 2-hole wall-hung type. The carrier frame shall be adjustable. Actuator flush panels shall be die-cast zinc, molded plastic or fabricated stainless steel and plated to preserve material integrity. All components shall be compliant with applicable codes and product standards.

Warranty

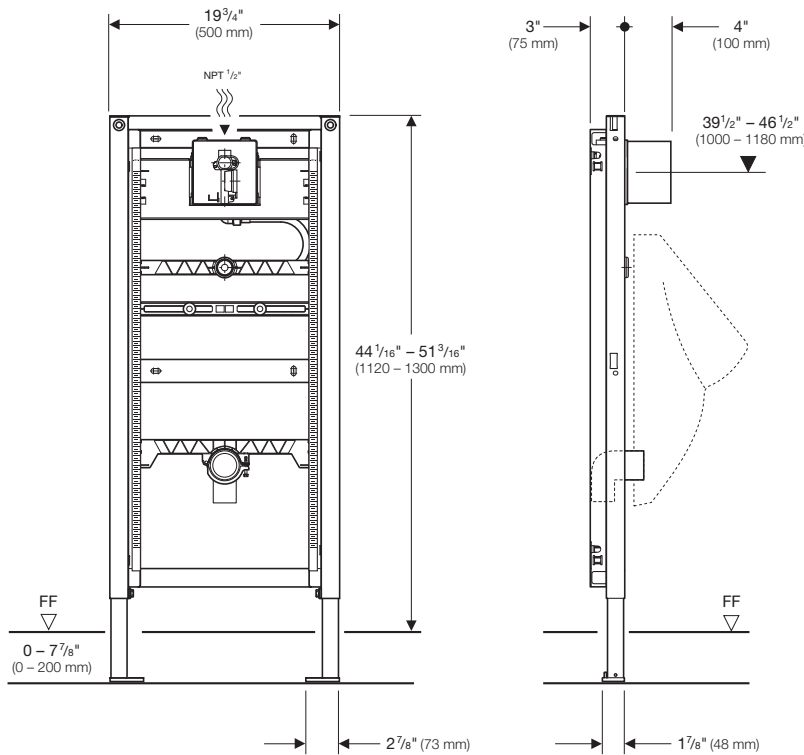
Limited lifetime warranty on flush valve and carrier. One-year warranty on actuator flush panels.

Features

- Water consumption – system allows up to 1.0 GPF (3.8 LPF)
- 16-gauge, powder-coated, structural-steel tubing rated to 110 lbs (50 kg) without damage to finished wall or carrier unit
- 51¾" (1300 mm) frame height depending on urinal

Complies with the latest editions of:

- ASME: A112.6.2



Product specifications subject to change without notice.

ARCHITECT/ENGINEER APPROVAL	
Job Name	_____
Date	_____
Quantity	_____
Model Specified	_____
Variations Specified	_____
Customer/Wholesaler	_____
Contractor	_____
Architect	_____